



TAPMI
(A constituent unit of MAHE, Manipal)



TAPMI Summer

Internship 2024

PGP Batch 2023–2025





TAPMI
(A constituent unit of MAHE, Manipal)



Internships at TAPMI for the Batch 2023-25 concluded on 13th March 2024 and 100% PGP 1 students have been placed. We have placed a total of 464 students across the five programs. The details are presented below:

The first year (PGP-1) of Batch 2023-2025 consist of 535 students spread across four programs:

MBA-Core	356 students
MBA-BKFS	59 students
MBA-HRM	44 students
MBA-MKT	51 students
MBA-IB	25 students

Of the 535 students, 71 students opted to self-source their internships and the remaining 464 were placed by the Institute



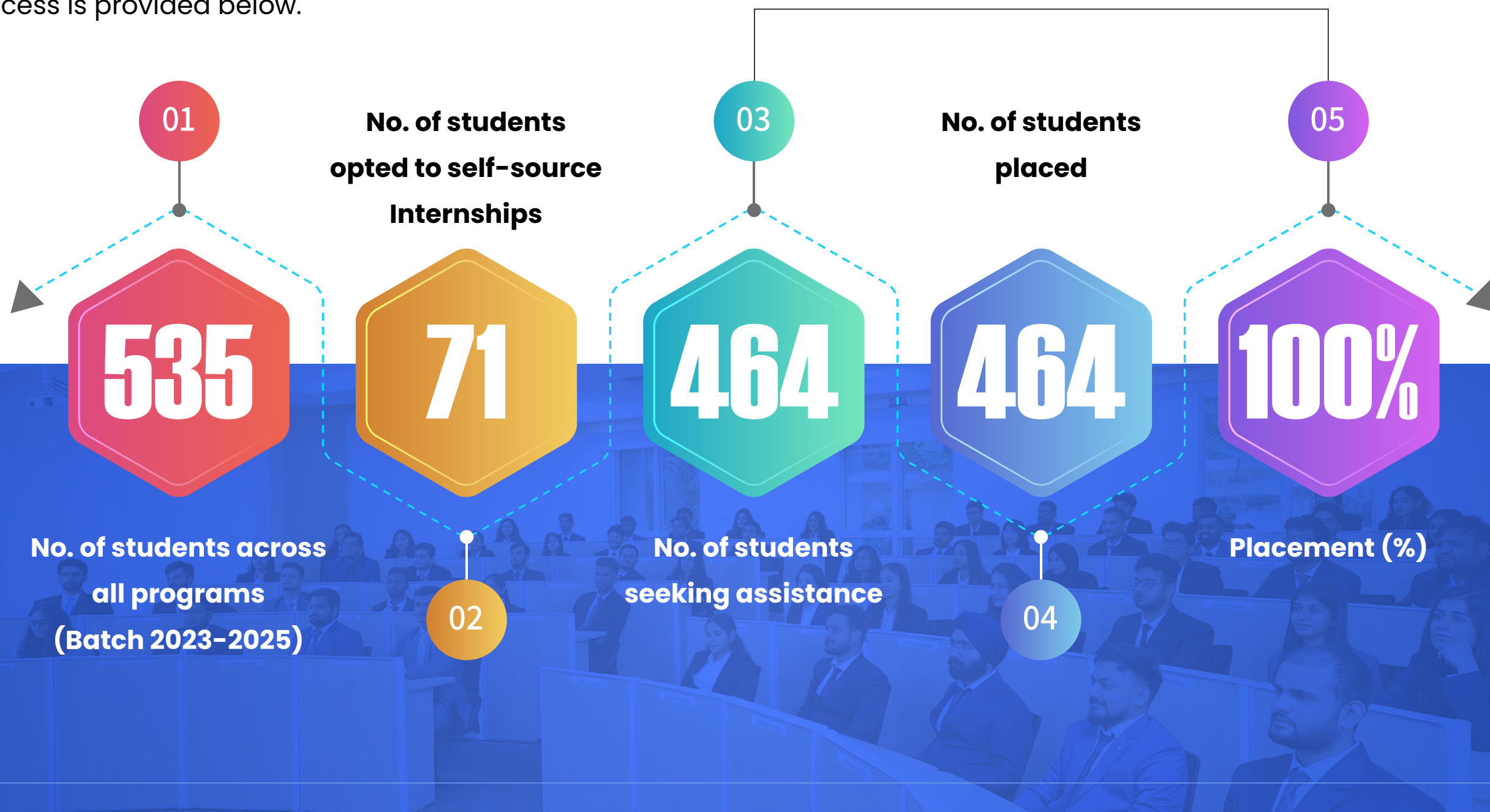


TAPMI
(A constituent unit of MAHE, Manipal)



A detailed analysis of the Internship 2024 process is provided below.

Internship assistance from the Institute





TAPMI
(A constituent unit of MAHE, Manipal)



Average and Highest Stipend

**Average
Stipend**

INR 34,452

Per Month

**Highest
Stipend**

INR 1,50,000

Per Month





TAPMI
(A constituent unit of MAHE, Manipal)



We have achieved 100% internships this academic year by placing all 464 students who sought internships through the Institute (71 students opted for self-sourcing their internships).



Highest stipend of INR 1,50,000 per month was offered by Wipro Consumer Care & Lighting (WCCLG).



Wipro Consumer Care & Lighting (WCCLG) followed by HDFC Bank, Himalaya, Optiv, JPMC, ICICI Bank, GEP, Gartner, Citi Corp & Michael Page are the top ten recruiters by stipend.



TAPMI
(A constituent unit of MAHE, Manipal)



Renowned organizations actively participate in recruiting interns from the TAPMI campus!



accenture ATCI

adani

Agro Tech Foods Limited



Capgemini

citi

CLSA

CRISIL
An S&P Global Company



DECATHLON

DELL

Deloitte.

DXC
TECHNOLOGY

EY
Building a better working world India

FUJITSU

Gartner.

GEP

HAVELLS

ICICI PRUDENTIAL
LIFE INSURANCE

labcorp

Lilly

Little associates
marketing & business strategy advisory

HDFC BANK

Hero

Himalaya
SINCE 1930

home first hffco
We'll take you home

HSBC

ICICI Bank

ITC
ITC Limited

JPMorganChase

LARSEN & TOUBRO

make my trip

MichaelPage

MOSSADAMS

OPTIV

PEOPLE BUSINESS

Piramal

PRIMACY
DELIVERING BRILLIANCE

TATA CAPITAL

TVS

V-GUARD

virtusa
Accelerating Business Outcomes

vlinder

vivriti
CAPITAL

WELLS FARGO

wipro wipro consumer care & lighting

ZF



TAPMI
(A constituent unit of MAHE, Manipal)



●
Highlighting a diverse range of industries that have hired our students as interns!



Sector	Number of companies
Advertising Services	7
Automotive Manufacturing	1
BFSI Sector	39
Books & Periodical Publishing	1
Branding & Advertising	2
Business Consulting & Services	8
Cement	1
Construction	2
Cyber Security	1
Dairy	1
Design Services	1
Digital Media	1
E-Commerce	1
EdTech	6
Power	1
FMCG	7
Food & Beverage Services	2
Healthcare	2
Home Appliances	1

Sector	Number of companies
HR	6
Investment Management	4
IT Services	24
Manufacturing	9
Market Research	1
Marketing	2
Mutual Funds Investment	1
Online Media	1
Pharmaceutical	2
Professional Training & Coaching	1
Project Management	1
Real Estate & Construction Tech	2
Retail	5
Strategic Management Services	1
Technological Research & Consulting	1
Travel	1
Warehousing & Storage	1



TAPMI
(A constituent unit of MAHE, Manipal)



**Providing a wide range
of internship profiles
for TAPMI MBA
candidates to explore!**

- Account Manager Intern
- Advertising & Marketing Intern
- AI Data Platform Strategy Intern
- Analyst Intern
- Area Manager Trainee
- Assurance & Risk Advisory Intern
- Banking & Financial Services Intern
- Banking Summer Analyst
- BDE & Digital Marketing Analyst
- Business Analyst Intern
- Business Consultant Intern
- Business Development & Technical Sales Intern
- Business Development Associate
- Business Development Executive
- Business Development Intern
- Client Coordinator Intern
- Client Relations Intern
- Consultant Intern
- Corporate Analyst & Development Program
- Creative Intern
- Credit Analyst Intern
- Customer Relationship Intern
- Cyber & Tech Risk Intern
- Cyber Risk Services Intern
- Cyber Security Sales Intern
- Cyber Strategy Intern
- Digital Marketing & Content Creation Intern
- Digital Marketing Intern
- Executive Operations Intern
- Finance & Compliance Inter
- Finance Intern





TAPMI
(A constituent unit of MAHE, Manipal)



- Finance Intern (SAP)
- Finance Research Intern
- Finance Summer Intern
- Financial Analyst Intern
- Financial Product Marketing Intern
- Financial Sales Intern
- Financial Services Intern
- Functional Analyst
- General Sales Intern
- Global Finance & Business Mgt Intern
- Global Risk a& Compliance Prgm Intern
- Graduate Intern
- HR Consulting Intern
- HR Intern
- HR Recruitment Intern
- Human Capital Intern
- Human Resource Intern
- Industry Research Analyst Intern
- Information Security Analyst
- Inside Sales & Customer Services Intern
- Investment Management Analyst
- Key Account Manager
- Management Intern
- Management Trainee
- Market Research Intern
- Marketing & Sales Intern
- Marketing Associate
- Marketing Intern
- MCG – Credit intern
- Mutual Fund Analyst
- Operations Intern
- People Intern



TAPMI
(A constituent unit of MAHE, Manipal)



- Performance Marketing Intern
- Product Communication Intern
- Product Manager Intern
- Project Intern
- Quantitative Trading Intern
- Regulatory & Legal Support Intern
- Research & Analytics Intern
- Research Analyst
- Research Consultant
- Research Intern
- Retail logistician
- Sales & Marketing Intern
- Sales Development Representative Intern
- SCM Research Intern
- Strategic Alliance Digital – Intern
- Strategic Finance Intern

- Summer Intern
- Supply Chain Intern
- Supply Chain Management Intern
- Territory Sales Manager Intern
- Treasury Management Intern
- Wealth Management Intern
- Wireframe Designer
- Workforce & Organization – Intern





TAPMI
(A constituent unit of MAHE, Manipal)



Pace Members



Aditi Saxena



Aditya Pawar



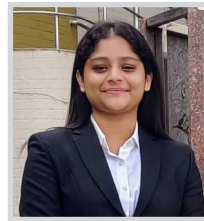
Aditya Rathi



Aman Shukla



Aman Tiwari



Andrea P Viju



Arnab Chatterjee



Avantika Joshi



Devam Joshi



Devansh Pahwa



Jaspreet kaur



Kashish Kukreja



Kirtika Tiwari



Mahima Dudeja



Manik Rana



Mridul Agarwal



Nancy Rout



Parth Mathur



Pawan Rajput



Pooja Mahla



Poojitha B



Prasana Varshan S



Preksha Kochar



Rahul Sankhe



Rakshita Aggarwal



Ramyasai



Rekha Kumari Singh



S.S.Saswat



Sharmistha Sharma



Shruti Goyal



Sudip Manik



Tanya Agarwal



TAPMI
(A constituent unit of MAHE, Manipal)



ASSOCIATION
OF
AMBA
ACCREDITED



www.tapmi.edu.in

[f](#) [t](#) [in](#) /mytapmi